

# The Temple Times

2710 Genesee Street, Utica, New York 13502

TE 315/724-4177 ★ TBE 315/724-4751

Tammuz / Av / Elul 5780  
Vol.11.11 July / August 2020

## Temple Beth El Service Schedule

### Summer Services at Temple Beth El

July 3, 2020  
July 10, 2020  
July 17, 2020  
July 24, 2020  
July 31, 2020  
August 7, 2020  
August 14, 2020  
August 21, 2020  
August 28, 2020

### Dear Friends,

To help make a minyan. Please join us.

### Temple Beth El Office Hours

Monday - Thursday: 9 A.M. - 3 P.M.

### CANDLE LIGHTING – 5780

July 3, 2020	8:26 PM
July 10, 2020	8:23 PM
July 17, 2020	8:19 PM
July 24, 2020	8:13 PM
July 31, 2020	8:06 PM
August 7, 2020	7:57 PM
August 14, 2020	7:47 PM
August 21, 2020	7:37 PM
August 28, 2020	7:25 PM

Please notify Temple of any **ADDRESS CHANGES** you have for the **winter or summer months**. We need these address changes if we are to continue sending the bulletin - Thank You.

Services via **ZOOM** at

5:30 PM Friday

By: Cantor Kalman Socolof

See your email for an  
invitation.

If we don't have your email  
please call the office or email it  
to [tbeutica@gmail.com](mailto:tbeutica@gmail.com)

### Temple Beth El

*A Conservative Congregation Established for  
the Worship of God, the Study of Torah and the Practice of Righteous Deeds*

2710 Genesee Street, Utica, NY 13502

315/724-4751 Fax 315/724-6883

E-Mail: [tbeutica@gmail.com](mailto:tbeutica@gmail.com)

Website: [tbeutica.org](http://tbeutica.org)

Cantor Kalman Socolof E-Mail: [uticacantor@verizon.net](mailto:uticacantor@verizon.net)

**Temple Beth El Organization**

Cantor Kalman A. Socolof

Dr. Stanley Gerstein, Rabbi Emeritus

**Officers**

Marsha Silverman, President

Mark Smith, Treasurer

David Lowitz, Secretary

**Trustees**

Ernest Berkowitz

Rae Rosenfeld

Dan Cohen

Stephen Rosenfeld

Michael Damsky

Yevgenii Samoshuk

David Lowitz

Brad Sklar

Ann Nathan

**Staff**

Mundy B. Shapiro, Executive Director

Julie Cain, Secretary

**Temple Beth El Cantor Message**

As I write this, it is three months since we have been able to meet in the Temple building. Like members of other faith communities, we have felt the absence of being able to come together. After all, the root of congregation is congregate. We have been holding Friday night services on line, but not Shabbat morning services. For those of us who attended regularly, or even occasionally, that absence is palpable.

Temple Emanu-El has now shared their procedures for reopening the building, including those for holding services. You may find those elsewhere in this bulletin. The procedures are prudent and in keeping with the cardinal value of *pikuach nefesh* – preserving life. They do, however, present our congregation with some challenges. Among these are:

- Due to the state's 25% occupancy restriction on rooms used for worship, the small chapel which we typically use is limited to 20 occupants at any time.
- All participants must be scanned for temperature. This would involve an electronic thermometer, whose use on Shabbat is problematic (I only learned about this four hours ago, and have not had time to research the issue).
- Each attendee is required to fill out and sign a screening form. Again, a problem for us on Shabbat.
- Use of a common prayer book to once a week.

I want to reiterate that the procedures are sensible and prudent. It is unfortunate that our mode of observance may keep us from being able to comply with them. For this reason, at least for now, Temple Beth El will continue to hold Friday night services on

**(Continued on Page 3)**

## Temple Beth El Cantor's Message (Continued from Page 2)

Zoom. Shabbat morning services will have to wait, for now, until we can find a way to hold them while taking the necessary precautions.

Normally I have Friday nights off in July and August. It goes without saying that these are not normal times. I will be conducting Friday night services (on Zoom) throughout July and August. I hope that you will be able to join us some or all of those nine evenings.

May this summer be one of health and happiness for all of us.

Cantor Socolof



## Temple Beth El President's Message

I hope this finds you all well.

We are looking at all options for the High Holidays but you should know that Cantor Fader and Elliot Rabin will not be coming to Utica this year.

Temple Emanu El's committees and board have been working long and hard to produce this policy. Please keep in mind that it can be changed if the government rulings are altered.

I received this document last night and the ritual committee will meet with Cantor Socolof in the next few weeks to figure out how Temple Beth El will go forward.

**All requests for Temple Beth El congregants to use the building must be go through the Temple Beth El Office!**

**Remember Pikuach Nefesh—preserving life takes priority over almost every other religious rule.**

If Services or events were to be held, the following procedures need to be followed. There must be a person responsible for implementing these procedures at every in-person gathering.

- Screening of participants as to medical status and possible exposure to Covid. - Persons with a temperature measurement above 100.4 degrees will not be allowed in.
- All congregants must use facemasks properly at all times. Persons on the bimah must wear face coverings unless actively leading the service.
- Sanitizing of Sanctuary, high touch areas, and washrooms before and after services.
- Use of a given common prayer book no more than one time a week.
- No more than 25% of total room capacity may participate:
  - Small Sanctuary: (Total Capacity: 85 people) 25% capacity = **20 people** maximum with specified spacing only.
  - Large Sanctuary: (Total Capacity: 270 people) 25% capacity = **67 people** maximum with specified spacing only.
  - Social Hall: (Total Capacity: 384 people) 25% capacity = **96 people** maximum, as long as proper spacing is maintained.
  - Edelstein Room: (Total Capacity: 120 people) 25% capacity = **30 people** maximum, as long as proper spacing is maintained.
- **Specific rooms would be open to essential personnel only, including all classrooms, youth lounge, office spaces and kitchen.**
- 12 feet spacing if there is singing/chanting, however, only 6 feet if there is no singing. Those sharing a household (people that live together) are exempted.

*(Continued on Page 4)*

## Temple Beth El President's Message (Continued from Page 3)

- One-way aisles and separate entrance/exits.
- No usage of other common objects such as drinks or food.
- Older individuals (age 65) or those at increased medical risk should consider not attending, based on their particular medical situation and advice that they have received from experts.
- Each attendee must complete and sign the Covid screening form prior to attending to facilitate contact tracing in the event of exposure.
- Any confirmed cases among people using the building must be reported immediately to the Temple Emanu-El office.
- Upon notification of potential exposure, the list of attendees will be shared with the County Health Department. All of the above restrictions apply to Outdoor Events as well

Procedures researched in documents from the CCAR, CDC, and NY State.

Please take care and stay safe my friends,

Marsha



Please donate  
your old iPads or Tablets.  
They will be used at the hospitals  
and nursing homes  
so patients can stay connected with  
their loved ones.  
**Contact Judy Oster (315) 525-1632**  
Thank you!

## Temple Beth El Executive Director's Message

Dear Friends,

We are again looking forward to a summer break, we have observed our holidays, lovely simchas, very difficult losses along with support and caring from and for our congregation.

We are now living in a different world, still dealing with a very difficult pandemic that has affected our daily lives in many ways, but the calendar doesn't change and we will observe our holidays and hopefully happy times again soon.

I want you all to know that Temple is here for our congregation at any time. It takes a phone call and we will help.

I thought the following verse, one of my favorites, would be a fitting way to end our summer bulletin.

### **Plant three rows of Peas...**

**Peace** of mind  
**Peace** of heart  
**Peace** of soul



### **Plant four rows of squash...**

**Squash** gossip  
**Squash** indifference  
**Squash** grumbling  
**Squash** selfishness



### **Plant four rows of lettuce...**

**Lettuce** us be faithful  
**Lettuce** be kind  
**Lettuce** be patient  
**Lettuce** really love one another



### **To conclude our garden we must have thyme...**

**Thyme** for each other  
**Thyme** for family  
**Thyme** for friends



**Water freely with patience and cultivate with love.**  
**There is much fruit in your garden because you reap what you sow.**

Have a pleasant, relaxing summer,  
Mundy

## Temple Beth El Donations

### THE VICTOR H. FLAX FUND

**In Memory Of:** David Lasky

☆ Judy Vogel

**In Memory Of:** Gerry Leboff

☆ Judy and Al Lovenheim

**In Memory Of:** Alan Nathan

☆ Ann and Family

**In Memory Of:** Eva Rosenberg

☆ Judy and Al Lovenheim

### CEMETERY FUND

**In Memory Of:** Rhoda M. Samuels

☆ Chuck and Rita Manning



## Temple Beth El Memorial Boards

The long hallway where Temple Beth El's sanctuary and office are located contains our Memorial Boards. If you have a family member that you would like to memorialize, and have a memorial light lit on the week of their yahrzeit year after year you may call the office. The cost of the plaque is \$300.00.

For any questions or additional information to honor or memorialize a loved one call the office at 315 724 4751.

Mundy



## Temple Beth El Simcha Boards

Temple Beth El has Simcha Boards to celebrate birthdays, Bat and Bar Mitzvahs, anniversaries, graduations, weddings and honors.

If there is someone in your family or a friend you would like to recognize you do so by sending all the necessary details to the office. For \$125.00 you can make someone proud and happy forever.

## Cemetery News

### Cleaning Headstones and Footstones

at

Temple Beth El Cemetery

House of Israel Cemetery

Shaarei Tefillah Cemetery

Mason Road Cemetery

Jonathan Lodge Cemetery

We have received many requests for cleaning headstones and footstones at our cemeteries. Now is the time to send in your request.

We are putting 2 benches at the Temple Beth El Cemetery for you to use. If the response is positive we will try adding benches to the other cemeteries as we raise the money.

In the past 4 years we have cleaned 200 + headstones and footstones and what a difference it made. Our cemeteries are beginning to look so beautiful and well cared for. We are so proud of the effort that many families made to beautify their cemetery plots. However there are many more stones that need our tender loving care.

### **The cost is very reasonable:**

- Headstones \$50.00
- Footstones \$35.00

If you are planning to have your family plot cleaned send a note, send an email or give us a call and we will take care of the rest.

**Perhaps you could even send a little extra and have a headstone or footstone cleaned for someone who has no family left to care for their plot.**

# *Temple Beth El Sisterhood New Year's Greetings*



*Sisterhood is again putting New Year's Greetings from our Congregants in the September bulletin this year. Please complete the form below and send it to Temple with your check for \$10.00 to be included in our New Year's Greetings to friends and family.*

*All forms must be received by August 7<sup>th</sup>, 2020  
to be printed in the September bulletin.*

*Sisterhood will appreciate your support and it is a mitvah to wish L'Shana Tovah to one and all.*

*Thank you in advance and L'Shana Tovah to friends and family.*

*Shalom,  
Mundy and Aliza*



---

*Name*

---

*Name*

*Send your greetings to:  
Sisterhood Temple Beth El,  
2710 Genesee Street,  
Utica, NY 13502*

# Building Usage Procedures

The Medical Advisory Group and the Temple Emanu-El Executive board have worked hard to determine Procedures for utilizing the building appropriately as we move forward.

There will be occasions that the building will be used, all building usage must be pre-approved by appropriate Temple Leaders.

\*Implementation of Procedures is not included in this document

Remember Pikuach Nefesh—preserving life takes priority over almost every other religious rule.

If Services or events were to be held, the following procedures need to be followed. There must be a person responsible for implementing these procedures at every in-person gathering.

- Screening of all participants as to medical status and possible exposure to Covid. Persons with a temperature measurement above 100.4 degrees will not be allowed in.
- All congregants must use face masks properly at all times. Persons on the bimah must wear face coverings unless actively leading the service.
- Sanitizing of Sanctuary, high touch areas, and washrooms before and after services.
- Use of a given common prayer book no more than one time a week.
- No more than 25% of total room capacity may participate:
  - Small Sanctuary: (*Total Capacity: 85 people*) 25% capacity =20 people maximum with specified spacing only.
  - Large Sanctuary: (*Total Capacity: 270 people*) 25% capacity =67 people maximum with specified spacing only.
  - Social Hall: (*Total Capacity: 384 people*) 25% capacity =96 people maximum, as long as proper spacing is maintained.
  - Edelstein Room: (*Total Capacity: 120 people*) 25% capacity =30 people maximum, as long as proper spacing is maintained.
- Specific rooms would be open to essential personnel only, including all classrooms, youth lounge, office spaces and kitchen.
- 12 feet spacing if there is singing/chanting, however, only 6 feet if there is no singing. Those sharing a household (people that live together) are exempted.
- One-way aisles and separate entrance/exits.
- No usage of other common objects such as drinks or food.
- Older individuals (age 65) or those at increased medical risk should consider not attending, based on their particular medical situation and advice that they have received from experts.
- Each attendee must complete and sign the Covid screening form prior to attending to facilitate contact tracing in the event of exposure.
- Any confirmed cases among people using the building must be reported immediately to the Temple Emanu-El office.
- Upon notification of potential exposure, the list of attendees will be shared with the County Health Department.
- All of the above restrictions apply to Outdoor Events as well

Procedures researched in documents from the CCAR, CDC, and NY State.



# **Join us for a screening of the movie Hotel Everest**

**Followed by a Q &A session with the creators of the film**

**Thursday, July 23, 2020  
7:00 PM**

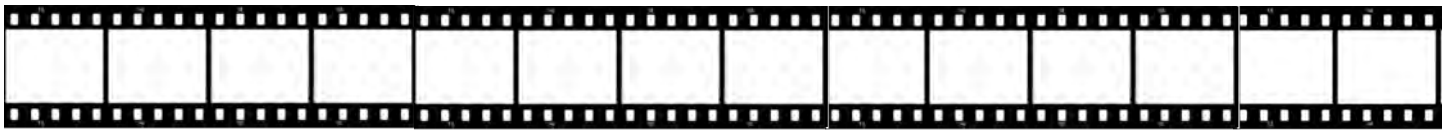
***(Zoom link to be sent out before the event)***



**Hotel Everest is a story about individuals who have the courage to overcome ancient hatreds, fear, and mistrust to find a better and peaceful way for themselves, their communities, and their families. They come together to understand the humanity in “the other”, forge connections that promote empathy, understanding, and alliances vested in self-determination to both peoples. Our film is not a historical account of the Israeli/Palestinian conflict but a contemporary, experiential film about living within it.**

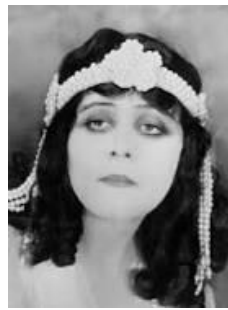
**We will watch the movie together (virtually), and then Claudia Sobral, the director of the film, and Eden Fuchs, one of the key participants in the film, will host a question and answer session for us.**





A bit of history and entertainment for your enjoyment.

# Jewish Women in Film with Lois Silverman



Part One -The Beginnings <https://youtu.be/UKLjL8b3wTA>

Part Two- -The 1930s <https://youtu.be/YYSus95xMGM>

Part Three - The 1940s <https://youtu.be/koM5FYoJXpA>

Part Four - Post WWII and the 1950s <https://youtu.be/aH8HrxVh0t4>





## **Now testing blood, platelet & plasma donations for COVID-19 antibodies**



**American  
Red Cross**

**You can help meet the urgent need for blood and receive insight into whether you may have been exposed to the coronavirus. For a limited time, the Red Cross is testing all donated blood for COVID 19 antibodies. To donate, you must be feeling healthy and well. Appointments are strongly encouraged.**

**The Red Cross is proud to partner with Temple Emanu-El to host blood drives on the following dates:**

**Tuesday July 28<sup>th</sup> 10a-3p  
Wednesday August 26<sup>th</sup> 10a-3p**

**To schedule an appointment call 1-800-RED CROSS (1-800-733-2767), visit [www.redcrossblood.org](http://www.redcrossblood.org) or use blood donor APP.**

## Temple Beth El Simcha Grams



## August 2020

AUGUST BIRTHDAYS	Date	AUGUST ANNIVERSARIES	Date
Ellie Neslin	02	Richard and Heather Cohen	8/9/97
Sylvia Herman	07	Kalman and Vicki Socolof	8/31/80
Max Kowalsky	09	Mark and Kathy Smith	8/26/00
Judy Oster	10		
Rita Manning	17		
Ben Hirshfield	20		
Irving Feldman	25		
Mundy Shapiro	30		

## September 2020

SEPTEMBER BIRTHDAYS	Date	SEPTEMBER ANNIVERSARIES	Date
Harry Fisher	03	Alan & Marsey Rosenblum	9/1/1985
Neil Cohen	05		
Jonathan Orkin	09		
Janice Sherline Jenny	11		
Emily Levine	12		
Heather Cohen	15		
Stuart Hirshfield	16		
Fred Lampert	19		
Ethan Lampert	24		
Jeffery Feiner	25		
Shauna Hirshfield	27		
Max Cohen	29		
John Brophy	29		

Enclosed is \$1.50 per name that I have indicated. I have enclosed a check made out to the Sisterhood of Temple Beth El for \$\_\_\_\_\_ for \_\_\_\_\_ (#) of Simcha Grams

Mail to:

**Rae Rosenfeld  
3008 Oneida Street  
Sauquoit, NY 13456**

Due by the 15<sup>th</sup> of the month

I have printed my name as I wish it to appear on the Simcha Gram.

Name: \_\_\_\_\_

Telephone Number: \_\_\_\_\_

Please call the Temple Office 724-4751, if you wish to add any names to the list

## Temple Beth El July Yahrzeits

The following Yahrzeit will be observed during the week of July 4 to 10, 2020 - 12 to 18 Tammuz 5780

These names will be read from the pulpit on Friday July 3, 2020

Milton A. Abelow*	Edward Cohen*	Esther L. Harris*	Herbert Philipson*
Martha Abelow	Myron Cohen*	Harry P. Kahn*	Sarah Savett*
Leo Abelow*	Howard Cramer	William N. Kahn*	William Schwartz*
Aron M. Brooks*	Joseph Feinberg*	Louis Kaplan*	David M. Solomon*
Rachel Lena Boff*	Bertram Goldberg*	Hugo Lobenstein*	Roslyn Savlov*
Helen Brooks*	Arthur L. Goldman*	Florence Goldstone Myers*	Shirley Ruth Sherman*
Anna Berger*	Fred I. Grossman*	Leah Mettelman*	Allen H. Samuels
Jerrold D. Berkeley*	Pierce Goldberg	Bessie Finer Meyers*	Morris Sherman*
Herbert H. Bernstein*	Renna Goldstone*	Julia Melzer*	Pincus Targer*
Harold Burger	Hyman (Hy) R. Herman*	Sadye E. Nusbaum*	Florence Wineburgh

The following Yahrzeit will be observed during the week of July 11 to 17, 2020 - 19 to 25 Tammuz 5780

These names will be read from the pulpit on Friday July 10, 2020

Harris Abramson*	Syra Friedlander*	Hilda Kahn*	Harry N. Savett*
Sallye Abramson*	Leah Friedman*	Mathew Klein*	Dr. Jacob Savett*
Samuel Berman*	Allen Goldstein*	David Nathan*	H. Samuel Slater*
Bessie Brill*	Moses A. Goldenson	Fritzi P. Rizika*	Gertrude Smith*
Sarah Kirshtein Beisser	Julius Grossman*	Avis Joan Reines	Sadie Savlov*
Taube B. Cramer*	David Howard Harris*	Sarah Rothstein*	Sol Shattan*
Harry Copeland*	Sandra Sugarman Jocknowitz*	Abraham Rossky*	Bessie Cohen Siegel*
Jonathan D. Derminio*	Adolph Jacobs*	Morris Rudolph*	Wolf Smith*
Edith Edelman*	Estelle Klion*	Anne Schainuck Robbins*	David N. Wilcove*
Sophia Block Freeman*	Arthur S. Kahn	Nathan Savett*	

The following Yahrzeit will be observed during the week of July 18 to 24, 2020 - 26 Tammuz to 3 Av 5780

These names will be read from the pulpit on Friday July 17, 2020

Albert Abraham	Gisella Grossman*	David Myers*	Ethel Cohen Rosen*
Anna R. Bartnick*	Melvin Hollander*	Manuel J. Mansky*	Leon Sack*
Beatrice Burke*	Fannie Krulik*	Eva Marmelstein*	Rachel Sumberg*
Anna Bernstein	Jane Lindsey*	Edith Potash*	Isidor Speiller*
Dr. Irving Cramer*	Albert Morris*	Bella K. Perlman*	Charles Wineburgh*
Ray Cone*	Louis Movsh*	Jack Rosen	Rachael Lewis Wolfe*
Stephen P. Goldstone*	Gisella Grossman*	David Myers*	Celia Woloshin*

The following Yahrzeit will be observed during the week of July 25 to 31, 2020 - 4 to 10 Av 5780

These names will be read from the pulpit on Friday July 24, 2020

Harry 'Doc' Arlen*	Sheva Gilbert*	Julius Kaletsky*	Charles T. Sitrin*
Betty Cohen Alpert	Aaron Goldstone*	Julius Levine	Joseph Segall
Abraham S. Braverman*	Sarah Samuels Glickstein*	Elizabeth Newberger	Morris Vyrer*
Frances Barth*	Amy Kowalsky Gaudin	Joseph Philipson*	Herri Van Leeuwen
Lillian Shapiro Cramer*	Morris B. Horowitz*	Ann Heiten Rosenberg*	Nathan Wilcove*
Harry Cohen*	Rebecca Karinsky*	Maurice Snyder*	Tina L. Wolfe*
Ruth E Cummins	Larry Kall*	Sarah Samuels*	Freda Haven Wallace*
Joseph Gray*			

The following Yahrzeit will be observed during the week of August 1 to 7, 2020 - 11 to 17 Av 5780

These names will be read from the pulpit on Friday July 31, 2020

Hanna Arlen*	Anne Gross	Carlotta Krohn Posternak*	Bertha Snyder*
Martin Benson*	Morton Goldstone*	Ruth Robbins*	Anna Sladusky*
Johanna R. Braverman	Anna Belle Weiss Harris*	Louis Rubin*	Shirley Kaplan Tannenbaum*
George Bernstein*	Pearl Hymes*	Jennie Rubin*	Moses A. Winnick*
Harry Caplan*	Sadie Kopel*	Sadye Rockford*	Ida Yatkowsky*
Esther Fox*	Ida Nusbaum*	Joseph Simons*	

## Temple Beth El August Yahrzeits

The following Yahrzeit will be observed during the week of August 8 to 14, 2020 – 18 to 24 Av 5780

These names will be read from the pulpit on Friday August 7, 2020

Bessie H. Abelson*	Meyer Kleiman*	Esther Rose Pleeter*	Joseph Sonneborn*
Harry Barsky*	Nathan Katzman*	Rose Rudolph*	Theodore H. Silverman*
Alfred Cohn*	AnnaLee Kamin*	Goldie H. Rosenwald*	Leon Sperling*
Harry S. Demell*	Paula Mettleman	Martha Root*	Max Sucolovsky*
Rae Smith Frankman*	E. Michael Meyer*	Edward L. Rosenthal*	Jacob Tumposky*
Lillian Lenchner Goodfriend*	Hyman Philipson*	Fannye Stone	Esther Winnick*

The following Yahrzeit will be observed during the week of August 15 to 21, 2020 – 25 Av to 1 Elul 5780

These names will be read from the pulpit on Friday August 14, 2020

Solomon Bernstein*	Diane K. Goldman*	William B. Leventhal*	Nathan L. Potash*
Dr. Gerald D. Berkowitz*	Jack Glover*	Nancy Frances Meyer*	Hershel Rosenblum*
Lazarus L. Berman*	Dr. Alfred Heymann*	David Mettelman*	Philip Rudolph*
Harry Cramer*	Ida R. Hodos*	Anna F. Marans*	Minnie Stern*
Rachel Friedman*	Ethan Michael Kamin*	Jacob (Jack) Philipson*	Rose L. Sherline*
Rose B. Grossman*			Seymour Tumposky

The following Yahrzeit will be observed during the week of August 22 to 28, 2020 – 2 to 8 Elul 5780

These names will be read from the pulpit on Friday August 21, 2020

Jennie L. Berman*	Jacob Friedlander*	Abe Jacobson*	Jack Stark*
Dr. Nathan K. Bernstein	Abraham Gennis*	Moe Meyer*	Isidor Siegel*
Lillian Shapiro Cramer*	Ben Greenberg	Samuel W. Miller*	Mina Smith*
Ethel Cohen	Miriam Grubman	Jacob O. Nusbaum*	Max Leonard Seld*
Leonard Cramer	Joseph Goldstone*	Joseph A. Plotka	Jane Targer*
Miriam F. Enright*	Louis Haven	Anne Rebeck	Sarah Wineburgh*
Ruth Feldman*			

The following Yahrzeit will be observed during the week of August 29 to September 4, 2020 – 9 to 15 Elul 5780

These names will be read from the pulpit on Friday August 28, 2020

Irma Berger*	Harry M. Friedman*	Joe Polak*	Jessie K. Siegel*
Harry Cramer*	Rose Greene*	Abraham W. Rizika*	Howard Slater
Rachel Cominsky*	Anna R. Harrison*	Saul Silverman*	Hymen Sitrin*
Solomon Caplan*	Salimon Z. Kaplan*	Abe E. Samuels*	Leah Sladusky*
M. Donald Cohen*	Sera Mine Levein*	Joseph H. Sherman*	Minnie Tumposky Toffler*
Johnny Dreels*		Gerald Sherline*	Julius L. Weinstein*







# Empire Recycling Corporation

**We're one of the nation's largest full-service recycling centers.**  
*Family owned and operated for more than 100-years!*

We have 11 metal, paper, transportation, and steel fabrication divisions across New York State.

## **Metal**

[www.empirerectycling.com](http://www.empirerectycling.com)

Removal and responsible recycling of ferrous and non-ferrous metals.  
**We are your metals expert!**



**Empire Recycling** accepts all metals, including steel, copper, aluminum, cast iron, stainless and more, with container service available. Our certified scales will turn your metal into CASH!

Think of us for your home, including appliances, aluminum siding, lawn furniture, or other metals.

## **Paper**

[www.confidata.com](http://www.confidata.com)

Protecting you from identity theft by securely shredding confidential documents.



**Confidata's** fleet of mobile shred trucks can come to you for on-site confidential shredding. Or, we offer secure containers which can be picked up and shredded off-site when full. Confidata also offers hard drive and all electronic media destruction.

**SMR Fibre** is a state-of-the-art recycling center for scrap paper and other materials. Look to us for the recycling of non-confidential papers, office papers, cardboards, plastics, shrink wrap, aluminum litho plates, x-ray films and negatives.

**SMRFibre**

## **Transportation**

[www.erltrucks.com](http://www.erltrucks.com)

Connecting Upstate NY businesses to the ports of New York City, New Jersey, Pennsylvania, and Connecticut.



**ERL Intermodal** has provided dedicated import/export freight services for more than 40 years! Offering same day or overnight inbound and outbound deliveries, to and from all New York and New Jersey Ports, from all across NY State.

## **Steel Fabrication**

[www.nathansteel.com](http://www.nathansteel.com)

Providing the services to meet all your steel needs, from project conception to completion.

**Nathan Steel**  
Steel Fabricators & Service Center

**Nathan Steel** is a full-service steel fabricator, providing structural steel fabrication, stairs, erection services, and special orders. Our leading-edge CNC (computer numerical control) equipment includes a drill line and a plasma cutter, enabling us to cut special profiles in carbon steel, stainless steel and aluminum.

North Genesee and Lee Streets, Utica (behind Babe's) • (315) 724-7161 • [www.empirerectycling.com](http://www.empirerectycling.com)

## **ARTHUR NOLE SYSTEMS IN HAIR**

3993 Oneida Street  
New Hartford, NY 13413  
Phone 797-5670

Hair Designers:     Arthur Nole  
                                 Donna Nole

Office Hours By Appointment  
Telephone: (315) 725-9762



**LYNN TOMAINO, L.C.S.W.**  
*Clinical Social Worker*

1 Ellinwood Court  
New Hartford, NY 13413

Cognitive Behavioral Therapy  
Couples Evaluation & Treatment

## **Star Bakery**

Fresh Kosher Baked Goods  
103 Main Street, Whitesboro, NY  
315 768 1462  
Wednesday to Friday 6 a.m. to 2 p.m.  
Saturday and Sunday 6 a.m. to 1 p.m.  
**QUALITY AND FRESHNESS  
MAKES THE DIFFERENCE**  
Closed Monday and Tuesday

## **Mohawk Valley Monuments, LLC**

**Ben Morgan, Owner**

**(315) 724-7629**

**2270 BROAD STREET, FRANKFORT**  
(Just beyond Main Post Office)

## **BREMER'S WINE & LIQUOR**

**4684 Commercial Drive  
New Hartford, NY 13413**

**Savings : Selection : Service**



**(315) 768-6400**  
***Purveyors of Wine and Spirits***

## **Bentz Funeral Service, Inc.**

**Mark C. Bentz**

13 Oxford Road, New Hartford, NY 13413  
(315) 724-2731

E-mail: [mcb\\_mark@aol.com](mailto:mcb_mark@aol.com)  
Web Site: [www.bentzfuneralhomes.com](http://www.bentzfuneralhomes.com)

## **Ads in the Bulletin**






If you are interested in placing an ad in The Temple Times, now is the time to do it. Your ad will be in each monthly bulletin for the next year at the following prices:

Business Card Size	\$125.00
Quarter Page	\$150.00
Half Page	\$175.00
Full Page	\$200.00

If you are interested, please contact either Mundy 315-724-4751 or Rita 315-724-4177.



# JULY 2020

SUNDAY	MONDAY	TUESDAY	WEDNESDAY	THURSDAY	FRIDAY	SATURDAY
			1	2	3 TBE Virtual Shabbat Service 5:30 PM TE Virtual Shabbat Service 6:00 PM	4 TE Virtual Bagels and Torah 10:00 AM 
5	6	7	8 	9	10 TBE Virtual Shabbat Service 5:30 PM TE Virtual Shabbat Service 6:00 PM	11 TE Virtual Bagels and Torah 10:00 AM
12	13 	14	15	16	17 TBE Virtual Shabbat Service 5:30 PM TE Virtual Shabbat Service 6:00 PM	18 TE Virtual Bagels and Torah 10:00 AM
19	20 TE Men's Club Virtual Lunch 12:30 PM	21	22 TE Finance Meeting 7:30 PM	23 TE Limud Group Program 7:00 PM Screening of the movie <i>Hotel Everest</i>	24 TBE Virtual Shabbat Service 5:30 PM TE Virtual Shabbat Service 6:00 PM	25 TE Virtual Bagels and Torah 10:00 AM
26 	27	28	29 Erev Tisha B'Av TE Board Meeting 7:00 PM	30 Tisha B'Av	31 TBE Virtual Shabbat Service 5:30 PM TE Virtual Shabbat Service 6:00 PM	

# AUGUST 2020

SUNDAY	MONDAY	TUESDAY	WEDNESDAY	THURSDAY	FRIDAY	SATURDAY
						1
2	3	4 	5	6	7 TBE Virtual Shabbat Service 5:30 PM	8
9	10 	11	12	13	14 TBE Virtual Shabbat Service 5:30 PM	15
16	17	18	19	20	21 TBE Virtual Shabbat Service 5:30 PM	22
23	24	25	26	27	28 TBE Virtual Shabbat Service 5:30 PM	29
30	31					